



CHURCH OF  
SAINT ASAPH

# OUTLOOK

## June 2010 Newsletter

St. Asaph's Church is called to be a progressive Christian community

We will welcome everyone to God's table.

We will stand with those in need and advocate for the poor, the sick, the friendless and the marginalized.

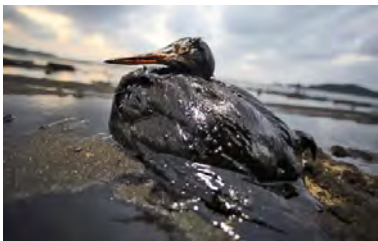
We will make children central to our life as a community

We will celebrate the presence of God with joyful, engaging and inviting worship.



Dear Friends in Christ,

Hooray, summer is here. All right, I know that it does not begin until June 21, but the thermometer outside has read 90 degrees on more than one occasion already and it sure feels like summer. Trinity Sunday will have come and gone by the time you read this and we will be in our Summer Schedule mode. New to this summer, folks are invited to gather at 8:15, in the Parish Hall to reflect on the lessons for the day. Yes, we will be worshipping outside in the cool of the morning, beginning at 9:15 am with refreshments following.



Summer is a time of creation and recreation. As of this writing, oil has been flowing into the gulf. The images that we feared may come have become reality. Fragile places along the Gulf are damaged if not destroyed. Eco systems that have taken lifetimes to evolve are interrupted if not ended. Copious amounts of "mud" have been pumped down the well but no one seems certain yet that it will work. When, oh when will we learn?

If summer is indeed a time of increased awareness of God's creation, I cannot help but believe we are all feeling the broken-ness of the Gulf disaster. Can we learn? Are we willing to understand that we are not over and against what God has created, but one part of that creation and that we with creation make a whole? Pentecost Sunday we were again reminded that the mission of the Church is the working of reconciliation. Could we please add into that equation that we are not only to work for reconciliation with God and ourselves and one another, but also reconciliation with the world God has created and of which we are a part?

Kudos to Laura Brennan and crew who have successfully found a place for a Farmer's Market one block from Saint Asaph's on Thursday afternoons throughout the summer. Come and support this very green effort that increases our awareness of our fragile earth and maybe even buy some of those heirloom tomatoes that taste so good. Of course gardening continues on our property as well. Watch in the coming months for an opportunity to help keep a farm green in Chester County. I have been wondering aloud about a windmill here on the top of the Belmont Plateau. Could our corner of Bala Cynwyd ever become energy self-sufficient? Every little bit helps. It does. It must.

Christians believe that every day we are given the gift to re-create ourselves. In Christ, with Christ, through Christ we are made a new creation as we remember the gift of God's renewing Spirit in Baptism. My friends I hope you find numerous opportunities to re-create this summer.

In Christ,  
Barry J. Harte+

## Liturgy

### ICONS Sunday



**V. Blue Lemay**, the creative energy behind ICONS Sunday.

I heard from Blue that Icons Sundays will be suspended for the summer and will begin again in the fall.

\*\*

## Pastoral Care

### Pastoral Care from Beth-Zatha<sup>1</sup> to Bala Cynwyd By Tim Gavin

“Do you want to be made well,” Jesus asks the man by the pool who had been ill for 38 years. John’s Gospel illustrates Jesus’ sensitivity to the man in this exchange by having Jesus invite the man into the process of healing. The healing, although on the surface was physical (he picks up his mat and walks away), addresses the man’s emotional need to be made whole.

This scene in chapter 5 of John’s Gospel captures the essence of Pastoral Care in which the provider engages with an individual on equal terms by allowing the individual to set the agenda of the conversation and of the care. Just as Jesus allows the man his own autonomy, the pastoral care provider will also offer the individual receiving pastoral care autonomy. Furthermore, the Pastoral Care relationship is built upon mutual trust and respect. It must be noted that Jesus did not pull a power play by using his authority as a position of strength rather he used his authority as a position of compassion.

St. Asaph’s is attempting to put Jesus’ example into action by offering a Pastoral Care Team for the needs of individuals in the parish who may be suffering from any type of loss. The Pastoral Care Team will supplement and support Barry’s pastoral role. Just as the man in John’s Gospel had experience the loss of his legs, he also was experiencing a loss of the will to be made well. When he was asked if he wanted to be made well, he was invited into the process of Pastoral Care. The Pastoral Care Team of St. Asaph’s will assist parishioners who are experiencing a loss. A loss may

<sup>1</sup> Beth-zatha is the Hebrew word for the pool by the Sheep Gate in chapter 5 of John’s Gospel in which Jesus heals “the man who had been ill for 38 years.”

be the result of a change in jobs, retirement, the death of a loved one, the death of a beloved pet, the loss of childhood, the temporary loss of self-identity or a systemic loss due to change in a career, a change in family structure or a change in life circumstances. Pastoral Care offers an ear for listening, a shoulder to lean on, a presence to depend on during times when one is suffering spiritually and emotionally.

I have come to respect each individual on the team because of his or her commitment to the parish. As a group, they endured many hours of training, of meetings to carve out the organizational structure, and of developing a mission statement that fits into the context of St. Asaph’s overall mission. The group has chosen **Linda Sterthous as its Team Leader and Mary Chris Lindsay as its Associate**. The Team is in good hands. The Team Leader will serve as the point person for one year who will then be replaced by the Associate. As a result, a new Associate will be selected by the group. The Team has pledged to continue its training, to honor confidentiality, and to support Barry any way it can. The Team is looking forward to becoming a permanent thread in the cultural fabric of the community. It looks forward to visiting parishioners in the hospital or at home, to listening to parishioners troubles, and to supporting parishioners in a variety of ways from offering active listening to grief support. If a parishioner desires Pastoral Care, then he or she may call the Church Office and a member of the Pastoral Care Team will be contacted. A parishioner may request Barry or an individual member. **In addition to Linda Sterthous and Mary Chris Lindsay, the other team members are Janet Barrett, Joanne Behm, Bill Clayton, Tim Gavin, Andi Gray, Steve Lindsay, Karen Love, Marlene Milner, Sally Pearne, Johnathan Zellars and Jane Carton** who will serve as an auxiliary member. Within the next month, the Pastoral Care Team will print a brochure listing its mission statement, the team members, services, and contact information.

Just as Jesus formed a relationship with the paralytic man in John’s Gospel, which was built on mutual trust and respect, The Pastoral Care Team of St. Asaph’s in conjunction with Barry is looking forward to doing the same thing for the parishioners at St. Asaph’s Church. May the light of God’s face shine upon us all.

\*\*\*

## News from the Vestry

As many heard on Pentecost, there have been recent changes to the Vestry. After two and a half years of hard work as the Accounting Warden, **Neil Desnoyers** stepped down from the Vestry. Neil served St. Asaph’s with extraordinary care and dedication. He managed the church finances through not only the Bala Build process but also shepherded the parish through a major audit. He has provided the parish with clear and

comprehensible analysis of the church's finances and everyone on the Vestry is grateful for his hard work.



**Smith Ragsdale**

was appointed to fill Neil's term on the Vestry and Teresa Wallace volunteered to move from her position as Senior Warden to Accounting Warden. **Chris Dennis** has agreed to take Teresa's place as Senior Warden. As always, if any one has any questions about these changes, please speak to either of the wardens or to Barry Harte.

At the most recent Vestry meeting on May 17, 2010, the Vestry reviewed the state of the parish finances in detail. The good news is that parish expenses are mostly under-budget for the year so far and we have not incurred any substantial unexpected expenses. The Vestry is working hard to continue to trim expenses, looking for ways to save money in large ways and small. For example, we will not pay for bookkeeping services this year and we are looking to trim our costs for payroll services. The bad news is that revenue is down significantly. At the end of April, pledge income was more that \$8000 below the budgeted amount. This revenue shortfall has meant that our cash flow is very tight and we are not always able to immediately pay bills or expenses when we receive them.

To help the parish get back on track financially, the Vestry asks that each pledging member review the pledge statement that has been mailed from the office. If you find any errors, please let us know. And if you are not current on your pledge, we would greatly appreciate your efforts to bring your pledge account up to date as soon as possible. **If you are new to St. Asaph's and would like to become a pledging member, please speak to a member of the Stewardship Committee: Mary Allen, Kristen Stewart, or Teresa Wallace.**

\*\*\*

## Evangelism Notes

A table appeared on a Sunday morning after Church and **Anne Speyer** warmly welcomed new folks and provided them with a newsletter and quick answers to any questions asked. This new welcome table is only the beginning of a renewed emphasis on the welcoming of the visitors that are coming through our doors and into our community.

Would you like a turn at the table? Maybe you would like to bake bread and take a loaf to the home of a visitor? Perhaps you enjoy the sending of a note to say welcome? Maybe you might be interested in the shepherding of a new member or a family into the greater life of the parish?

Please speak to Anne Speyer or Fr. Barry if you are interested in participating in our expanding evangelism program.

\*\*\*

**Behold what you are; become what you see.  
(St. Augustine)**

## Outreach



**Janet Barrett, chair**

Outreach in this church is more than alive and well, it is in-your-face and breathing life support to those in need. Read the following and see what you think.

## Walk for Hope

By Sally Pearne

Dedicated hands, hearts – and feet – collaborated to bring about St. Asaph's Walk for Hope, a local breast cancer walk for the congregation and the community. Proceeds from this event were donated to Breastcancer.org, an informational website, based in Ardmore, founded by Lankenau Hospital radiation oncologist **Dr. Marisa Weiss**, providing support, information, and the most current medical research findings.

Children (from age 6), teens, and adults, and on upwards to let's just say 70+ arrived to donate, help out and walk. Fr. Barry led the procession which stepped off the church grounds headed down Conshohocken State Road to Cynwyd Park where water, tables and ribboned pink carnations were handed out to all walkers.

Following the walk, participants were treated to a highly informative talk and power point presentation by renowned breast surgeon and educator, **Dr. Dahlia Sataloff**, who spoke about the current status or recent, remarkable advances in the treatment of breast cancer.

The goal of this event was to provide a local, easily accessible experience for those in the congregation and community wishing to raise support and awareness of local and world-wide efforts to surmount the ravages of this disease.

My thanks to all who helped with this event, especially:

**Janet Barrett** for her indomitable Outreach Committee  
**Connie Stelzenmuller** and **Jane Carton** (and Sally's friend **Eleanor Bronner** visiting from California) for carnations and ribbons  
**Connie S. and Bernie** for their ideas and help with the large banner  
**Roy Harker** for his beautifully-designed postcard mailing  
**Mary Allen, Pat Wood, Bill Clayton, Doris Weimar, Carolyn Ramsey** for staffing the registration table before and during the walk  
**Mary Allen** for being the photographer for the event  
**Steve Sheeran** for tech support to Dr. Sataloff  
**Lynda Staton** for every possible assistance  
**Fr. Barry** for permitting and avidly supporting a new St. Asaph's adventure

Below are some observations from a few of people who took part in Walk for Hope:

**Doris Weimar:** *When Sally first asked me to participate in the Walk for Hope, I had to give some thought to how I would contribute. However, my answer was an instant, "Yes." This is because I was happy to do something for a member of my church family who makes attendance at St. Asaph possible through managing the volunteer drivers who come to the retirement homes on the Philadelphia side. Having gone online to acquaint myself with the group Breastcancer.org, I was pleased to see that it addressed a component often overlooked in the past, that is access to supportive information that deal with the feelings released on hearing the diagnosis, "Breast Cancer." For a variety of reasons having access on line as a person is able to internalize the information and then make decisions was a great idea in my opinion. Imagine, one can choose to have a coach. The lecture by Dr. Daliah Sataloff was concise, well illustrated, and presented a complicated subject in easily understood terms.*

**Margaret Grace Stineman, M.D.:** *A search for meaningful experiences, shared community and to look beyond my own personal challenges to honor those of others. To inspire and empower people to live and ride at the edge of their abilities and to experience the multifaceted aspects of life in full ways. You do not see, feel and be without experiencing.*

**Jenna Love:** *It was the second time I rode my bike without training wheels. Daddy was keeping me safe. I crashed only four times. I bumped into my dad two times. I ran over his foot. At church there was a cancer walk. They gave me a balloon and I tied it to my bike. The walk was fun. It was a hot, sunny day.*

**Jay Love:** *If you think about it, we all know someone affected by cancer. Luckily, these days I am fortunate to know survivors. For that, I'm thankful. For the cancer walk, it's more about the small things that add up. Set an example, take an hour out of your busy, weekend*

*schedule - it doesn't take much. More a question of why not - as opposed to why. Sue's college room-mate is a cancer survivor. My first thought was that we're way too young to have a friend/peer go through this. Disease doesn't pick and choose based on age/demographics. It was a good day - Jenna and I enjoyed the walk. Thanks to all the folks involved.*

**Mary Chawaga:** *It seemed that our participation was greatly appreciated and we were happy to support a great cause and a great event. My 3 friends and I usually go to one of the big walks – one of their mothers had breast cancer – so it just seemed like a fun thing us to do.*

**Carolyn Ramsey:** *As a breast cancer survivor I feel it is crucial to continue research and to keep the cause in front of people's attention.*

**Becky Barrett:** *Good to see so many people to support the women who have suffered. And the kids loved it!*

**John Barrett:** *Good to see so many people willing to work that hard on such a hot day – gets people out of their comfort zone.*

**Amanda MacCullough**, the representative from Breastcancer.org was the person who guided me in the steps necessary to set up a community walk to benefit that organization. She wrote to me:

"The total for the event is **\$720** - that is terrific! \*You had a very supportive and enthusiastic community at your church helping out, and it paid off wonderfully. This is a great financial contribution... It sounds like everyone was happy with how the day turned out..."

Again, my deepest appreciation to all who were a part of the Walk for Hope, and the many ways you demonstrated the spirit of community, caring, and giving, which is so much a part of St. Asaph's.





\*\*\*

### Dining Out for Life

About 40 of us descended on **Bob Ranando and Roy Harker** to enjoy a never-to-be-forgotten supper in their beautiful home to raise money for AIDS.

Roy is an imaginative gourmet cook. Nothing was too complicated for him. He prepared a Louisiana-style dinner that was definitely high maintenance--special sauces and many courses. Bob, as you may have experienced from the choir bake sales, is an amazing baker. He didn't disappoint anyone with his outstanding bourbon bread pudding, several special cheese cakes and delicious pecan pies.

It is with a great deal of thanks to both **Roy and Bob** for an evening of wonderful food and camaraderie and for their generosity in donating the entire proceeds of nearly \$2,000 for this event while incurring most of the expenses. Thanks also to **Laura Brennan** who helped to defray the cost of the wine and spirits.



### Philabundance Garden

It was a rainy kick off for the Philabundance garden and picnic. Not to be deterred by the weather Barry blessed the garden from the open front door of the church and we picnicked inside thanks to the Kill and Grill team.



**Martha Buccino**, a representative from Philabundance was present during announcements to say a few words to the congregation about the organization and to thank us for our garden and support that we give to Philabundance.

**Katherine Kurtz** reports that we have cabbage, peas, beets, okra, tomatoes, sweet potatoes, egg plant and more coming along in the garden. She was also happy that two people from the community are gardening additional plots. They have given a small fee for water and soil and part of their harvest will go to Philabundance. Of course our Master Gardener, Wendy continues to take the lead on our expanded St. Asaph's Philabundance garden and we see that the rector has tilled another plot along St. Asaph's road near the rectory. I think St. A's is really making a difference in their mission to "harvest for hunger."

Scarecrows will be going up soon to both put a public face on our gardens and to ensure that we have the abundant harvest that we had last year. Folks are always needed in the garden, so grab your hoe and knee pads, put on your garden shoes and jump in.

Below are **Wendy and Katherine** and some of the **Schneider** family moving mushroom soil into the plots.



In the Philabundance Spring 2010 newsletter St. Asaph's is listed as one of the drop off sites to receive excess fruits and veggies. This will be our second year.

With Pennsylvania having the highest population of seniors after Florida, Philabundance is expanding its service to seniors living in Southeastern Pennsylvania. According to their newsletter, Philabundance in cooperation with the Commodity Supplemental Food Program distributes senior boxes containing 30 lbs of canned and boxed food including vegetables, fruit, juice,

pasta, milk, cereal, and proteins. Each box also has fresh cheese. If you are 60 or older and need food assistance, call 1-800-339-3663 for more information.

\*\*\*

### Food Baskets:

We are asked to continue to bring food each week for Eldernet and NorthLight. Many folks make the food basket part of their marketing each week as a reminder. Also, you need to leave the non perishables in the car so they will get to church--similar to the way we are now shopping with reusable bags.

\*\*\*

### School Supplies:

We will be collecting school supplies beginning in the month of June. I know that this seems early, but we are being guided by the Diocese who needs the supplies to pass on to children by mid August. They are also guiding us on the content and kind of supplies needed.

Most of these items can be purchased at the dollar store (except the back packs) as well as stores like Target and big grocery store chains. Each full back pack is probably worth \$30-40 so sharing a back pack with two or three other people is a good idea so that no one is taxed financially. Since the Diocese wanted a goal number for St. Asaph's, we said that we would fill at least 10 backpacks.

If anyone does not want to take part in building a back pack, but would rather contribute funds, send a check into the office marked for "school supplies".

In addition to buying the **Back Pack**, here is a list of the needed supplies to fill the back pack:

- 5 Spiral Notebooks**
- 1 Three Ring Binder w/Wide-ruled paper**
- 2 pkgs. of Pencils**
- 1 pkg. of colored pencils (1 pkg),**
- 1 box of markers,**
- 1 box of 24 crayons**
- 1 pair of Scissors**
- 1 pkg. of Erasers**
- 5 two pocket folders**
- 5 glue sticks or 1 bottle of glue**
- 1 Ruler**
- 1 Protractor**
- 1 Small calculator**

\*\*\*

### Summer Calendar for Outreach:

**June:** Begin collecting school supplies

**July:** On July **17 from 8:30 to noon**, the parish will participate in another Warehouse Day where we help

with packaging food. Children must be at least 9 years old to help in the Philabundance warehouse and they have us scheduled for 20 volunteers. Sign up early. A light breakfast will be available at St. A's before carpooling over and Pizza when we return.

**Christmas in July?** Kick off for the collection of Christmas gifts for our head start partner, Just Children. We are hoping that by starting early, we won't be up against the collection of other giving that we do in the fall. Begin to think 2 – 6 year-olds. Our party is chaired by **Connie and Nicky** and will take place on Saturday, December 11 from 12 – 3.

**August:** Collection of new or gently used clothing for the clothes closet at Andy Gray's elementary school. This is the time when most parents are trying to outfit their kids for school. More details to come.

\*\*\*

### Just Children—A Visit to St. Asaph

St. Asaph's is happy to announce that our next outreach guests to speak during the announcements on Sunday, June 6 will be Myra and Lisa, director and assistant director. I think it is important for our congregation to hear first hand of the impact that our help is making in the lives of the kids.

During our nearly two-year relationship with Just Children we have read and continue to read to their kids every Wednesday; we donated book cases and started a very successful library for them; we have built raised gardens in their backyard; painted meeting rooms; hosted Christmas parties with gifts for their families; supplied Thanksgiving baskets and have fostered a friendship with their staff.

This is one of our enduring Outreach partnerships partly because their building is so close to our church. So, don't forget to come on the 6<sup>th</sup> to meet Lisa and Myra.

\*\*\*

### Common Threads

This is a group of St. Asaph members who like to do handwork—knitting, crocheting, etc. They also look for opportunities to put their handwork to good use. Sally Pearne on the right asked Barry on Sunday to bless the hats shown in the photo being held by Sally and Janet Barrett. These hats will be given to cancer patients. I thought these hats were beautiful and stylish with a lovely covered button on top.



\*\*\*

### Helping Out Our Own

Don't Ask Don't Tell

We will fill plastic market bags with food and place them on the desk of the empty office across from Lynda. If you need food or if anyone you know is hungry, please help yourself to a bag of groceries. We will do our best to keep food available for our own from our food pantry donations.

\*\*\*

### Music and Arts



**Roy Harker, director of Music and Arts**

**Tony Rocco**

"Abriendo Ojos" (Opening Eyes/Changing Perceptions) Images from Colombia.

**June 11 through July 11, 2010**  
**Opening: Friday, June 11, 2010**



\*\*\*

## "Tossed and Found"

Recycled and Found Object Art by Ellen Sall and Linda Lou Horn will be on exhibit in the St. Asaph's Gallery through **June 6, 2010.**

\*\*\*

## Youth Formation



On Mother's Day the Rite-13 members **Mary Chawaga, Kevin Harte-McCormick and Margaret Nelsen (with help from Chris Nelsen, Rafa Porrata-Doria, Becky Barrett and Rite-13 co-leaders Andi Gray and Steve Sheeran)** hosted the 10 AM coffee hour. Dozens and dozens of cupcakes were made and eaten and a good time was had by all.



On May 22 and 23 Rite-13 held a clothing exchange. Free will donations were being asked for **Hospital Albert Schweitzer in Haiti** and clothing not exchanged was donated to the clothing bank of the Taggart School in South Philadelphia (Andi Gray teaches at the school). The exchange raised over **\$225.00** for the Hospital and five large bags of clothes were donated to the school. Thanks to all those who donated to the exchange.

\*\*\*

## Congregation

### SOAL

#### Summers On Asaph's Lawn

returns to our campus on Thursdays: **June 24, July 1, 8, 15 and 22.** Hot dogs will be provided along with the popcorn and a movie. Come join us at 6:30 for a hot dog or bring your own dinner out on the lawn in the circle. At 7:00 pm we will move to our newly painted and cleaned up space in the basement with a new giant screen where it will be nice and dark and cool and not raining for our movie.

Watch for movies from *Wallace and Gromit* to *The Fabulous Mr. Fox* to *Chicken Run*. Bring a comfortable lawn chair to enjoy the evening.

Watch for a **SOAL** to wind up our summer as well! If you would like to be the coordinator for an evening please speak with Fr. Barry+

\*\*\*

#### A Pentecost Thank You, Congratulations and Installation

The celebration of Pentecost was really festive in the church—beautiful flowers and kids marching through the church making joyful sounds. Barry recognized all graduates; teachers were thanked for their service this year and the newly formed Pastoral Care Committee was installed. (**Read Tim Gavin's article.**)

The men's Kill and Grill group have been cooking for every picnic we had in May—the kick off of the Philabundance garden and the Pentecost picnic. Our thanks to **John Barrett, Andrew Pickering, Smith Ragsdale and Bill Powell and Jay Love.** This group wanted to give thanks to **Janet Barrett** for helping their group understand their mission.

A special thanks to **Jonathan Zellars** who has been carrying left over food from our picnics and dinners downtown to the Logan Circle area near the Free Library. Each day many people converge to both hand out food and take home food. Amazing what people can do when there is a need.





\*\*\*



### Kudos to Laurie Nuovo

We publicly congratulate our graduates for their accomplishments, but what about their teachers who guided them. Laurie has been loved by students who continue to dedicate the yearbook to her. It gives me such pleasure to tell you that Laurie Nuovo has been named to a new post at Friends' Central.

Beginning July 1, **Laurie Novo** will become Co-Principal/Dean of Faculty at the Friends' Central School. An English teacher at the school for over 20 years, Laurie previously served as the chair of the English department and a grade advisor. While she will miss her full-time work as a teacher, she is looking forward to her administrative responsibilities and her chance to help plan the curriculum and future direction of the school. Laurie will also continue to teach at least one class per year.

\*\*\*

### Rent This Space! By Katherine Kurtz

The new meeting room, parish hall, sanctuary and grounds are now available for rental by community groups, individuals and of course parishioners.

Our meeting room is ideal for small groups, workshops, and classes and the parish hall. sanctuary and grounds are great for receptions, birthday parties, bar mitzvahs, showers, etc.

The vestry has cleared the insurance obstacles to renting for non-church functions, so consider St. Asaph's when planning your next party or meeting -- and tell your friends. Contact Katherine Kurtz (kknj11@yahoo.com or 610-664-0716) for details and availability.

\*\*\*



My first Sunday back from our vacation I noticed a beautiful bench in the parish hall near the piano. I was told that in-resident wood worker, **John Barrett**, crafted it out of clear pine. The finish has a lovely soft feel. When I queried John about the bench he said that he used a plane to get the wood smooth and then spent a lot of time rubbing the wood with a Butcher Wax.

John said that he reproduced the bench from an original design made at the Hancock, MA Shaker community around 1830. The "butterfly" braces under the seat are the hallmark of the Hancock cabinet makers. Originally used as dining room furniture, they were later replaced by the distinctive Shaker style low backed chairs.

So many talented generous people in our community. Thanks John.

\*\*\*

### Fresh Speech Theater

By Anne Speyer

St. Asaph's own Fresh Speech Theatre will be offering at least two new liturgical dramas this summer. The first play is scheduled for the June 27 Commemoration of St. Peter and St. Paul during our garden worship service.

At least one other drama will be performed during the Thursday evenings on the Lawn series in July and August. Date and title will be announced later.

All are welcome to participate in the activities of Fresh Speech Theatre. If you have a yen to act, write, costume, direct, or stage manage a play, please contact Anne Speyer. No previous experience is necessary.

\*\*\*

### The Poetry Corner

By Virginia Powell



#### *The Opening of Closure*

Raking the remainder of last year's leaves gives a feeling of finality to winter; a closure to days never to return, an opening to days never have been seen!

### ***A Welcomed Transition***

The smells of faint sweetness,  
The warm chills of air,  
The feeling of cool grass under bare feet  
The sun closing down upon another day trying  
desperately to be spring.

### ***The Bird's Song***

How many do I hear?  
There must be four or five  
Seemingly out singing the others or calling a welcome  
back.

Busy preparing a nestled home for little ones to come  
No leaves yet but plenty of grass to weave their magical  
nests.

I hear only the bird's song introducing us to spring's first  
glorious day!

\*\*\*

### **Diocesan Middle East Study Group**

By Mary Allen

Our May Meeting was well attended and generated many ideas for a series in the fall with the purpose of spreading information about the continuing plight and courage of the Palestinians. We are delighted that Barry is supporting us full-heartedly and is offering St. Asaph's as a venue for speakers, book signings, a play, and a movie in Oct.-Nov.

There are two events which require funding, so I would appreciate hearing from you with any ideas for raising money (in addition to the obvious possibility of charging admission).

(1) "My Name Is Rachel Corrie" is a monologue performed by an actress from Pittsburgh. Rachel Corrie was a young American who went to Gaza with the International Solidarity Movement to bear witness to the demolition of houses by Israelis using Caterpillar bulldozers. She bravely stood in front of a targeted house, in full view of other witnesses and the young driver. Tragically, he did not stop for her, and she was run over and died with a broken back. The play is composed entirely from her diaries and emails and is a most moving account.

(2) When Carolyn and I were in Palestine we met Mazin Qumsiyeh, a Palestinian who has taught genetics in the US for 30, but who has now returned to his native West Bank village, Beit Sahour, to protest the occupation by the Israelis. He is eager to come to speak here, but he needs to have his expenses paid. St. Joe's has offered up to \$200. as a donation, but I guess we'll need about

\$2000. Tonight (5/26) I heard Hillary Clinton joining the international condemnation of North Korea for its sinking of the South Korean ship. I immediately asked myself why the US will not support the many UN resolutions condemning Israel for its violation of human rights and the Geneva Convention?

All are welcome to attend the next meeting of MESHG at St. Asaph's on July 14th at 7:30.

\*\*\*

### **Property**

By Steve Sheeran

As part of Friends' Central Service Days seven students: **Evan McVeil, Janelle Purnell, Regena Clay, Nathaniel Hurwitz, Zack Barron, Nicole Wolfson and Spencer Villars; and one faculty member: Melinda Yin** spend two days in early May at St. Asaph's and Bala House. In the mornings they worked with **Steve Sheeran** and in the afternoons they worked with Bala House teachers.

On the first morning they prepped the former extend care room in the basement for painting, cleaned out the former nursery room closets and moved wine glasses, plates, paper products etc from the basement storage room into those closets and backed books from the church's library into plastic bins. On the second morning they transplanted a tree from the Philabundance garden to the field, dug two gardens and cleared out the area around the Celtic cross.

**Peter Chawaga**, on summer break from Wake Forest, is working for St. Asaph's under the direction of Steve Sheeran. So far the former extended care room has been painted and work has begun on the former Bala House offices.

\*\*\*

### **Book Review**

\*\*\*

**Chris Dennis** give us the following review to prepare us for our discussion on Monday, June 14 at 7:30 in the parish house. Please come and listen or join in.

#### Merchant of Venice

Therefore, Jew,  
Though justice be thy plea, consider this:  
That in the course of justice none of us  
Should see salvation. We do pray for mercy,  
And that same prayer doth teach us all to render  
The deeds of mercy.

Does it? Portia (disguised as the youthful but wise judge, Balthasar) speaks these lines in the famous courtroom scene in Shakespeare's Merchant of Venice. The play itself has engendered deep ambivalence

among readers and theater goers. Is this work by the iconic genius of English dramatic literature darkly anti-Semitic? Or does it engage anti-Semitic stereotypes only to probe the hypocrisy of Christians who victimize the Jews of Venice—and by extension that of the Londoners of Shakespeare’s audience? Film maker, Michael Radford (*Il Postino*), directed a 2004 film version of the play, starring Al Pacino as Shylock, and Lynn Collins as Portia. The film’s dialogue is essentially Shakespearean, and the director probes the brutal and brutalizing anti-Semitism of the Venetian Christians as well as, more generally, how we treat the “other” in our political, economic and personal relationships. How and why do we form and make bonds, agreements governing our actions and relations, including friendship and marriage, for example? Antonio’s (Jeremy Irons) love for Bassanio (Joseph Fiennes) causes him to mortgage a “pound of flesh” to support his friend’s courtship of Portia, introducing a dramatic tension between the demands and obligations of friendship and marriage. The book club will be focusing its discussion on Radford’s film adaptation (available at local libraries), with its lavish Venetian costumes and setting. Read the play, too, if you get a chance. The book club will meet Monday, June 14<sup>th</sup> at 7:30 p.m.

Here are a few You Tube clips to give you a flavor of the film:

<http://www.youtube.com/watch?v=mekXNERBW7Q&feature=related>

<http://www.youtube.com/watch?v=PxKUmdlYuJo&feature=related>

\*\*\*

### Island Fling—Sat., June 5, 2010



The Island Fling will be held this year on **Saturday, June 5 at 5:30 pm** at St. Asaph’s—outdoors, weather permitting.

Expect the same good Caribbean style food prepared by **Audrey, Sandra and their family and friends**. The Steel Band will be around to entertain us during the evening. Speak with **Karen Love** to make your reservations.

### Welcome Guests:

St. Asaph’s is a place that expects guests: people of all faiths, race, nationalities and walks of life; urban and suburban; rich and poor, gay and straight;

**families and singles; young, old, and in-between. We view hospitality as an important part of our ministry, and we hope you will feel welcomed here.**

\*\*\*

### Flower Guild

We don’t take a vacation from helping you memorialize a loved one or an event with flowers. Call the church office if you wish to donate a Sunday bouquet. At \$40 you will get beautiful flowers of your choice.



This arrangement of Pentecost Flowers was also dedicated to Bob Ranando’s late mother, Phyllis Ranando, on the anniversary of her birthday.

\*\*\*



Beginning June 6 Summer Sunday 9:15 AM on the labyrinth. Explore your faith in a place that’s as open minded as you are.

There will be folding chairs, but families may find beach towels and blankets more relaxing. For those who wish to continue exploring the gospels before service, meet in the church at 8:15.

\*\*\*

**Look for the weekly St. Asaph e-mail since this is our last newsletter until September.**

\*\*\*

## PRAYERS

### Those for whom our prayers have been asked:

We pray for Jamie Dent, Christine and Deron Heimerdinger, Kathy Hubbard, Alice Longdin, John and Janet Longdin, Felix Okolo, Nico Clothier & Family, The Achuff Family, Everett William Frank, Patricia Harker, Kayte Reeves, Annabelle Shore, Joan Schroeter, Glenn Stroud, Doretta Walker, Robbie Walters, Sue Waybright, and LCpl William Kurtz Zuzzio

### Those who have recently died in the parish:

Beth Kohler, (Steve Lindsay) , Roger Dooley, (Renee Banson)

***St. Asaph's Church is a house of prayer for all people and a community that works to be progressive in belief and inclusive in practice.***

### Sunday Schedule

8 am, Contemplative Communion

9 am, Spiritual Formation for all ages

10 am, Parish Eucharist

5 pm, Emerging worship (2nd and 4<sup>th</sup> Sundays)

### Holly Days as announced

### Summer Schedule

9:15 am

### Parish Staff

Roy Harker, Director of Music & Arts

Steve Sheeran, Youth Formation

Lynda Staton, Parish Administrator

Tim Gavin, Seminary Intern

**Pastoral Care Team:** Rev'd Barry Harte, Lynda Sterhouse, MaryChris Lindsay, Tim Gavin

### Parish Vestry

Teresa Wallace, Accounting Warden

Chris Dennis, Rector's Warden

Mary Allen, Joanne Behm, Laura Brennan, Nicky Garvan,

Sandra Haye-Carr, Mary Chris Lindsay, Bob Powell, Smith

Ragsdale, Kristen Stewart, Lori Wernersbach

### Parish Office

Hours: Mon-Fri, 9a-3p

Phone: 610-664-0966

Fax: 610-664-3760

### Diocese of Pennsylvania

The Rt. Rev'd Charles E. Bennison, Jr, *Bishop*

The Rt. Rev'd Rodney R. Michel, *Assisting Bishop*

The Rt. Rev'd Allen Bartlett, *Assisting Bishop*

The Rt. Rev'd Ed Lee, *Assisting Bishop*

Contact **Connie Stelzenmuller**, [stelzen@verizon.net](mailto:stelzen@verizon.net), newsletter editor, to submit articles or to request changes.

---

**TIME SENSITIVE MATERIAL -- PLEASE HANDLE PROMPTLY**

## OUTLOOK

CHURCH OF SAINT ASAPH

27 Conshohocken State Rd

Bala Cynwyd, PA 19004

On the web at

[www.saintasaphs.org](http://www.saintasaphs.org)

Check and return to church office

If you no longer wish to be on our mailing list.